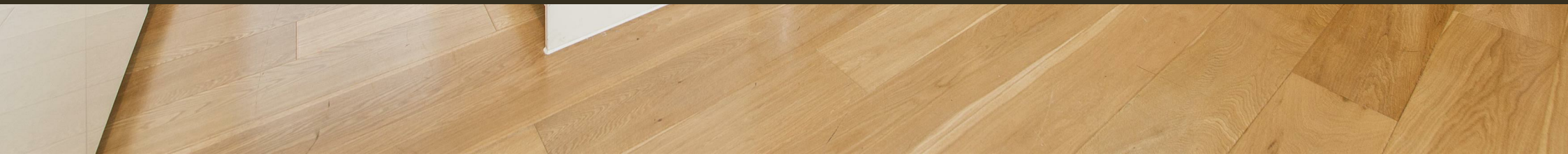




102 Marsham Street, Westminster
London SW1P

GARTON JONES.COM



102 Marsham Street, Westminster London, SW1P

GARTON JONES.COM

49 Marsham Street Sales +44 (0) 20 7340 0480
London westminster@gartonjones.com
SW1P 3DP www.gartonjones.com

£700 Per Week

We are pleased to offer this 2 bedroom apartment available to let located on the 1st floor (with lift) of this small modern development junction of Marsham Street and Page Street. This furnished property is approx. 640sq.ft (59.5sq.m) and further benefits from a dual aspect open plan reception room with a smart integrated kitchen with a breakfast bar, two double bedrooms with fitted wardrobes and modern bathroom. Marsham Street is extremely convenient for access to many of the renowned local landmarks is extremely convenient for access to many of the renowned local landmarks which include the Houses of Parliament and Westminster Abbey. The local transport links of Victoria Station is nearby providing mainline UK services including the Gatwick Express as well as the underground services of Victoria, Pimlico, St James Park and Westminster. The area has an abundance of amenities and restaurants such as The Vincent Rooms, The Cinnamon Club, the Ivy Bar and Grill and Yaatra based in the Old Westminster Fire Station. You are just a short walk away from the Chelsea College of Arts and St Johns Smith Square Concert Halls offering a variety of classical musical performances. Garton Jones are based on site and manage this apartment. *Please note that some of the furniture may differ to that displayed in the photos and that an internal inspection should be completed.

5 Week Security Deposit
Minimum Term 6 Months
Council Tax Band F (London Borough of Westminster)
EPC Rating B (85)

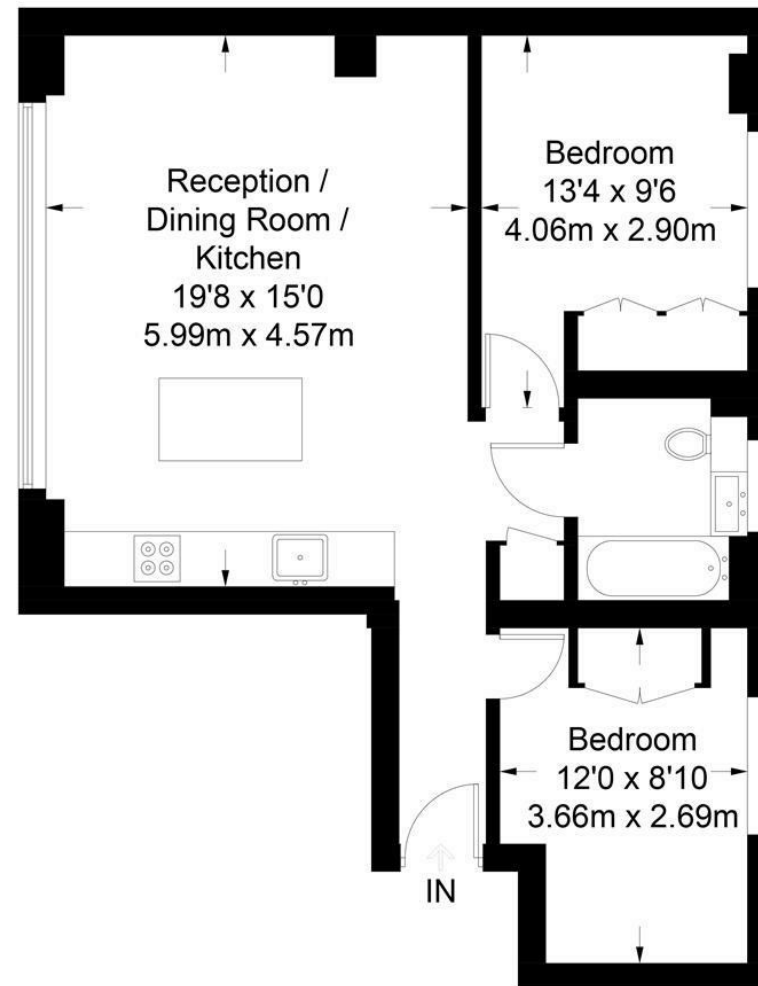
- 2 Bedroom Apartment
- 1st Floor (Lift)
- 640 Square Feet
- Open Plan Reception Room
- Smart Integrated Kitchen
- Modern Bathroom
- Available Immediately
- Close to Local Amenities
- Walking Distance to St James's Park, Westminster & Victoria Rail/Tube Links



EPC certificate available on request.

Altayar House

Approximate Gross Internal Area = 640 sq ft / 59.5 sq m



First Floor

Not to scale, for guidance only and must not be relied upon as a statement of fact.
All measurements and areas are approximate only and have been prepared in accordance with the current edition of the RICS Code of Measuring Practice.

